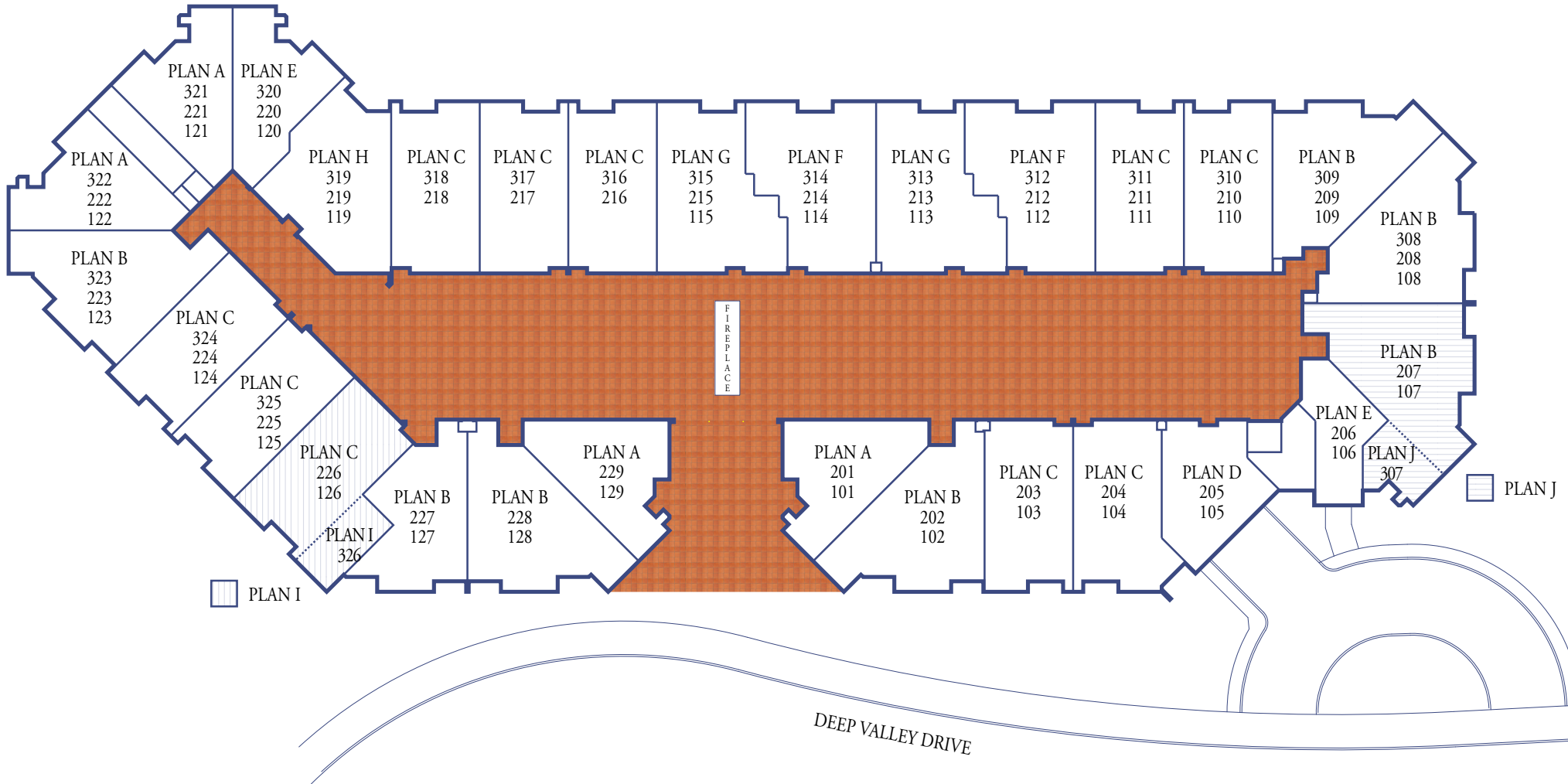




# LA SEVILLA

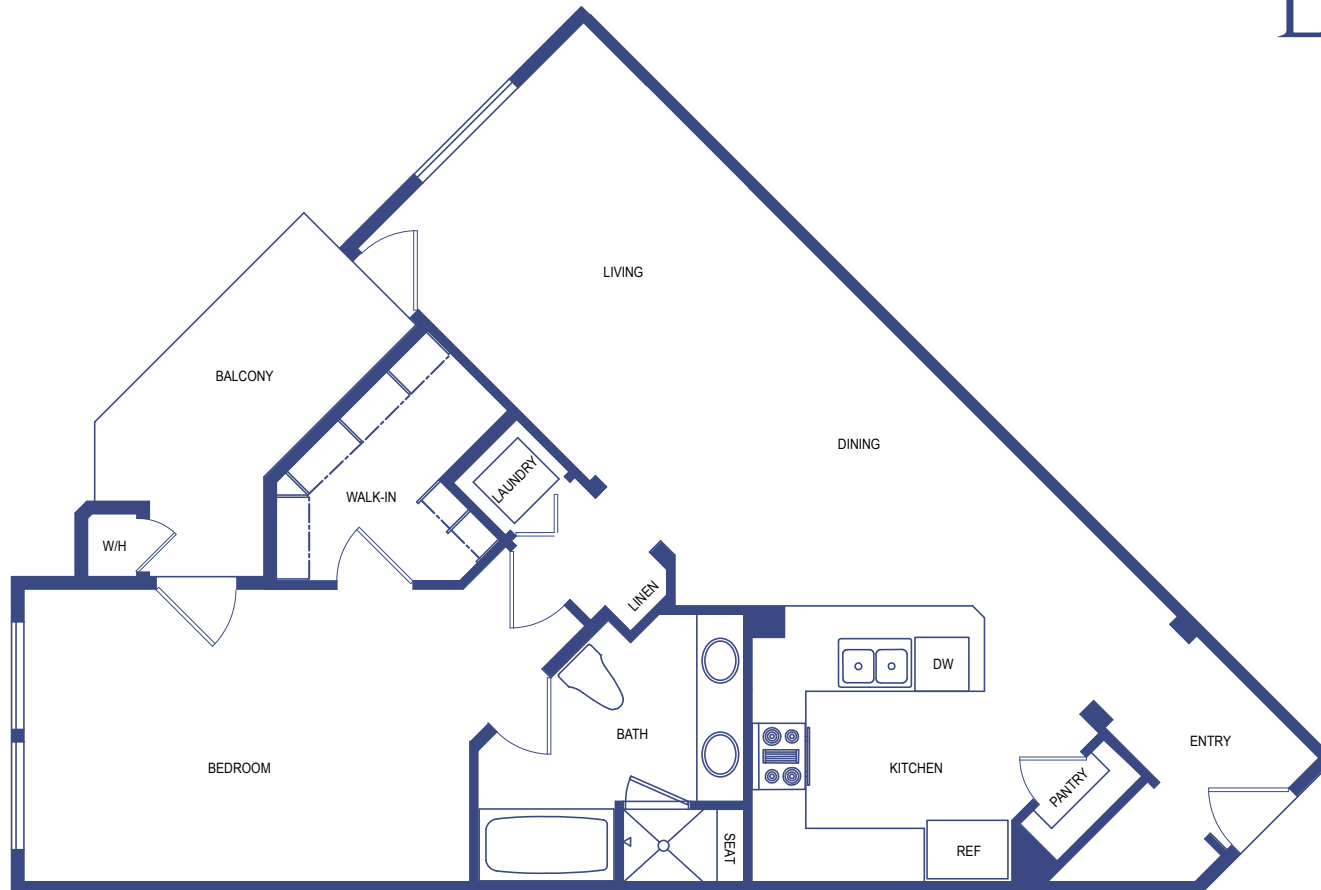


In a continuous effort to make improvements, RHE-75, LLC reserves the right to change prices, optional items, floor plans, features, exterior designs, materials and specifications without prior notice or obligation. Lot sizes and square footage are approximate. Buyers to conduct and rely on their own investigation. See Sales Representative for details. 2025. Scott Anastasi Realty DRE Lic #0137505



# LA SEVILLA

PLAN A  
924-936 SF | 1 BD 1 BA



In a continuous effort to make improvements, RHE-75, LLC reserves the right to change prices, optional items, floor plans, features, exterior designs, materials and specifications without prior notice or obligation. Lot sizes and square footage are approximate. Buyers to conduct and rely on their own investigation. See Sales Representative for details. 2025. Scott Anastasi Realty DRE Lic #0137505



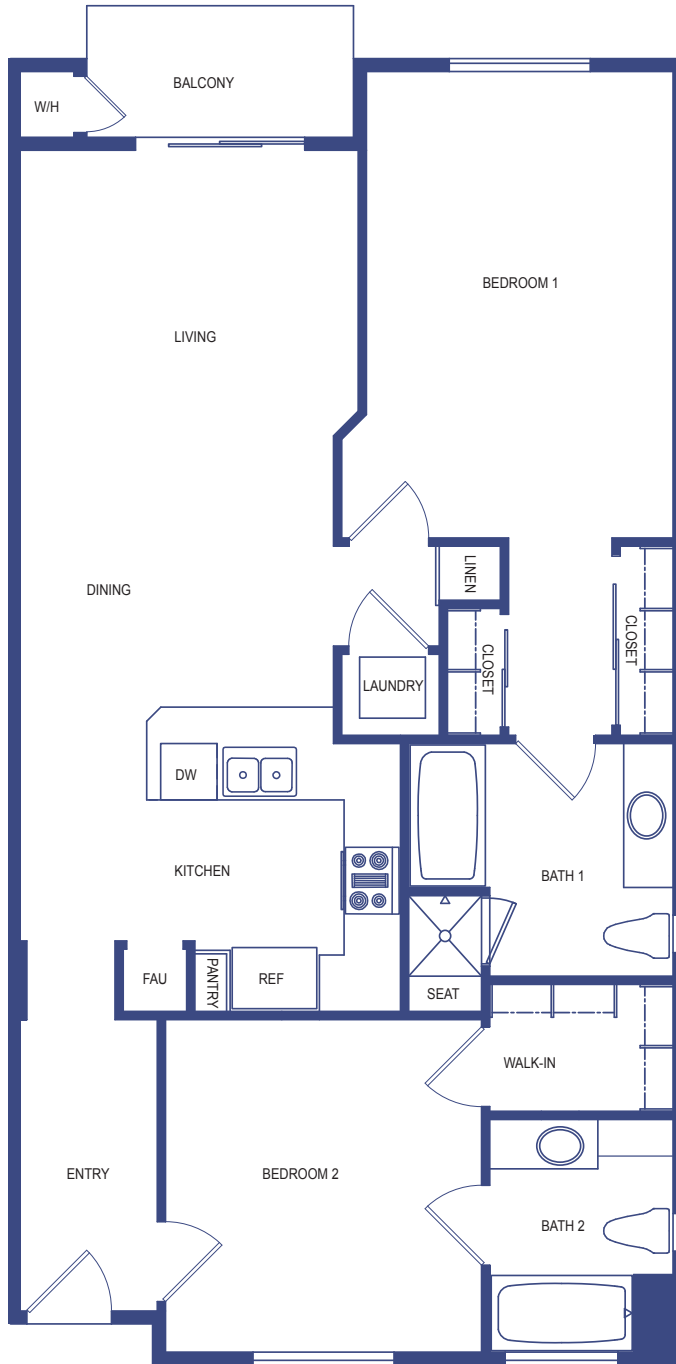
# LA SEVILLA

PLAN B

1251-1284 SF | 2 BD 2 BA



In a continuous effort to make improvements, RHE-75, LLC reserves the right to change prices, optional items, floor plans, features, exterior designs, materials and specifications without prior notice or obligation. Lot sizes and square footage are approximate. Buyers to conduct and rely on their own investigation. See Sales Representative for details. 2025. Scott Anastasi Realty DRE Lic #0137505



# LA SEVILLA

PLAN C  
1071-1113 SF | 2 BD 2 BA



In a continuous effort to make improvements, RHE-75, LLC reserves the right to change prices, optional items, floor plans, features, exterior designs, materials and specifications without prior notice or obligation. Lot sizes and square footage are approximate. Buyers to conduct and rely on their own investigation. See Sales Representative for details. 2025. Scott Anastasi Realty DRE Lic #0137505



# LA SEVILLA

PLAN D  
883 SF | 1 BD 1 BA

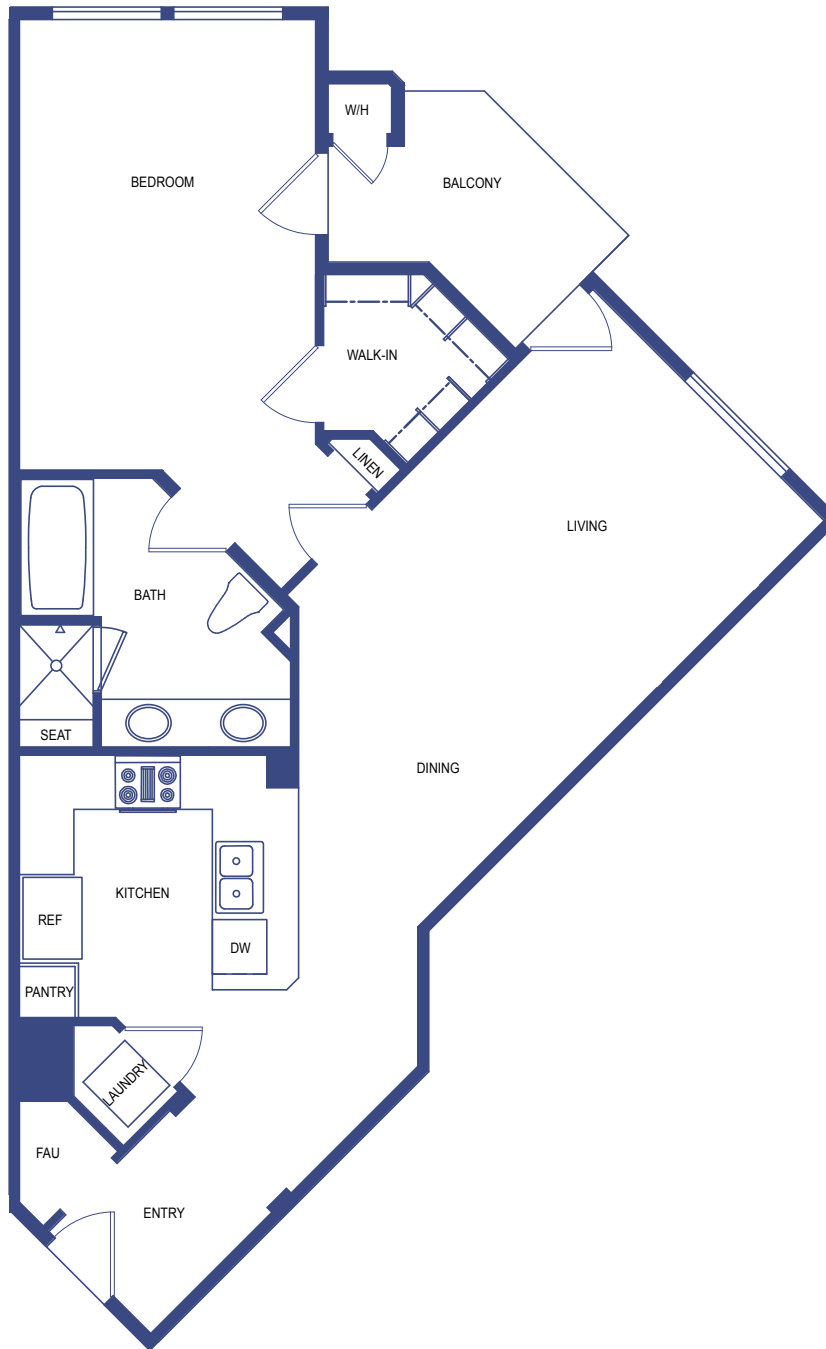


In a continuous effort to make improvements, RHE-75, LLC reserves the right to change prices, optional items, floor plans, features, exterior designs, materials and specifications without prior notice or obligation. Lot sizes and square footage are approximate. Buyers to conduct and rely on their own investigation. See Sales Representative for details. 2025. Scott Anastasi Realty DRE Lic #0137505



# LA SEVILLA

PLAN E  
857-866 SF | 1 BD 1 BA



In a continuous effort to make improvements, RHE-75, LLC reserves the right to change prices, optional items, floor plans, features, exterior designs, materials and specifications without prior notice or obligation. Lot sizes and square footage are approximate. Buyers to conduct and rely on their own investigation. See Sales Representative for details. 2025. Scott Anastasi Realty DRE Lic #0137505



# LA SEVILLA

PLAN F  
1358 SF | 3 BD 3 BA

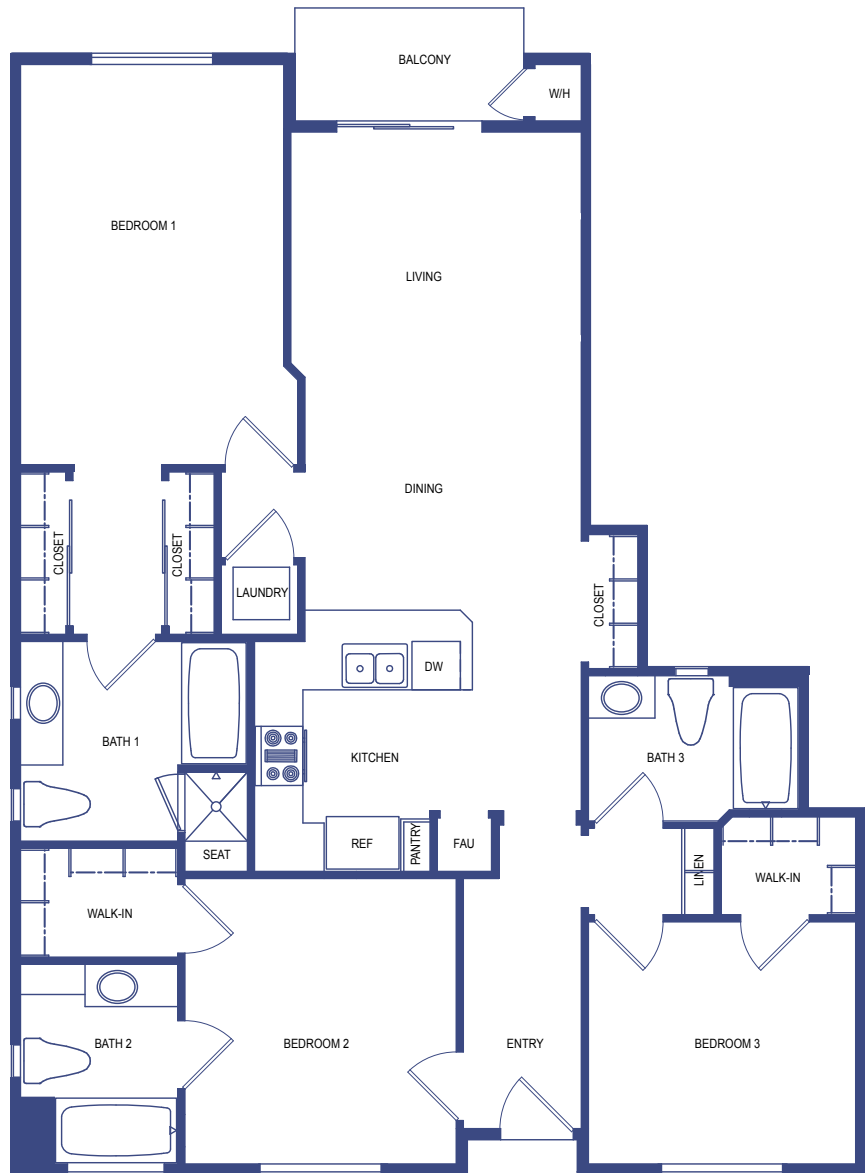


In a continuous effort to make improvements, RHE-75, LLC reserves the right to change prices, optional items, floor plans, features, exterior designs, materials and specifications without prior notice or obligation. Lot sizes and square footage are approximate. Buyers to conduct and rely on their own investigation. See Sales Representative for details. 2025. Scott Anastasi Realty DRE Lic #0137505



# LA SEVILLA

PLAN G  
1309 SF | 3 BD 3 BA



In a continuous effort to make improvements, RHE-75, LLC reserves the right to change prices, optional items, floor plans, features, exterior designs, materials and specifications without prior notice or obligation. Lot sizes and square footage are approximate. Buyers to conduct and rely on their own investigation. See Sales Representative for details. 2025. Scott Anastasi Realty DRE Lic #0137505





# LA SEVILLA

PLAN H  
1260 SF | 3 BD 2 BA



In a continuous effort to make improvements, RHE-75, LLC reserves the right to change prices, optional items, floor plans, features, exterior designs, materials and specifications without prior notice or obligation. Lot sizes and square footage are approximate. Buyers to conduct and rely on their own investigation. See Sales Representative for details. 2025. Scott Anastasi Realty DRE Lic #0137505



# LA SEVILLA

PLAN I  
1367 SF | 3 BD 3 BA

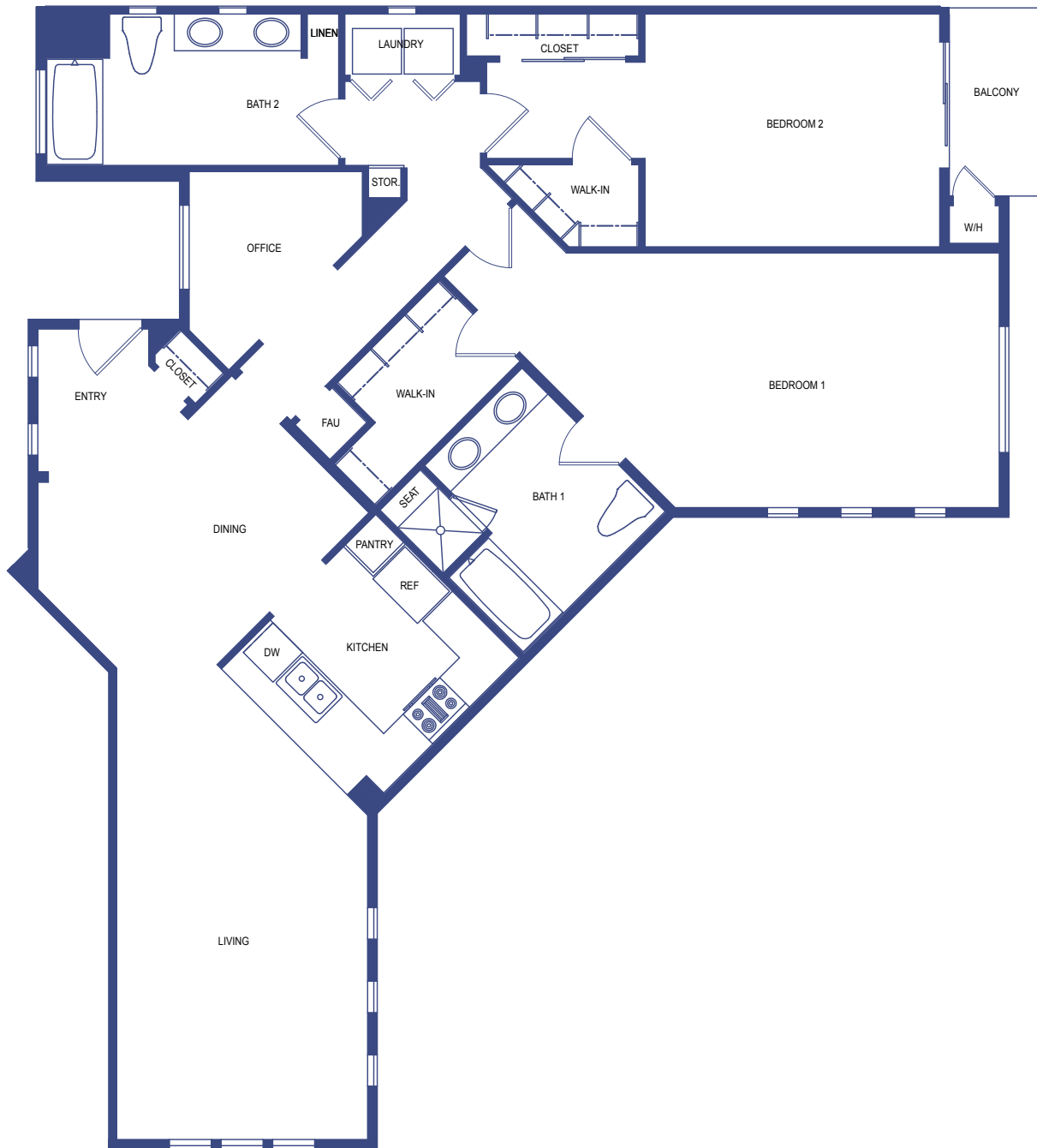


In a continuous effort to make improvements, RHE-75, LLC reserves the right to change prices, optional items, floor plans, features, exterior designs, materials and specifications without prior notice or obligation. Lot sizes and square footage are approximate. Buyers to conduct and rely on their own investigation. See Sales Representative for details. 2025. Scott Anastasi Realty DRE Lic #0137505



# LA SEVILLA

PLAN J  
1559 SF | 2 BD 2 BA + OFFICE



In a continuous effort to make improvements, RHE-75, LLC reserves the right to change prices, optional items, floor plans, features, exterior designs, materials and specifications without prior notice or obligation. Lot sizes and square footage are approximate. Buyers to conduct and rely on their own investigation. See Sales Representative for details. 2025. Scott Anastasi Realty DRE Lic #0137505



# LA SEVILLA

## INTERIOR FEATURES

- ◆ **Elegant Flooring:** Wide plank hardwood flooring throughout for a warm and inviting ambiance.
- ◆ **Climate Control:** Energy-efficient air conditioning and central heating for year-round comfort.
- ◆ **Smart Connectivity:** Advanced structured wiring with CAT 6 for phone and data, plus RG6 cable for TV.
- ◆ **Modern Lighting:** Extensive use of LED puck lighting for a bright, contemporary look.
- ◆ **Sophisticated Details:** Decorative white horizontal blinds and two-panel interior doors with sleek black hardware.
- ◆ **Efficient Laundry:** Front-loading washer with NeverRust stainless steel tub and front-load dryer with LoDecibel Quiet Operation for a quiet and dependable laundry experience.

## GOURMET KITCHENS

- ◆ **Luxurious Countertops:** Quartz countertops with 1½” square eased edges for a polished finish.
- ◆ **Designer Backsplash:** Full tile backsplash for a refined touch.
- ◆ **Premium Appliances:** Stainless steel suite, including a 3-door French door refrigerator, built-in microwave, slide-in self-cleaning gas range, and dishwasher.
- ◆ **Custom Cabinetry:** White or grey European-style cabinets with shaker-style doors, soft-close drawer glides, and satin nickel or traditional black hardware.
- ◆ **Functional Elegance:** Undermount stainless steel sink with a single-lever faucet and decorative pendant lighting over peninsula in select plans.

## SPA-INSPIRED BATHS

- ◆ **Modern Showers:** Full-size master bath shower with glass enclosure and stainless steel trim.
- ◆ **Relaxing Secondary Bath:** Bathtub with classic white subway tile and designer-selected accents.
- ◆ **Coordinated Cabinetry:** White or grey European-style cabinets with shaker-style doors and refined hardware options.
- ◆ **Luxurious Tile:** Designer-selected porcelain tile floors and shower walls.
- ◆ **Sophisticated Touches:** Decorative matte black framed mirrors and Delta plumbing fixtures with satin finishes.
- ◆ **Sleek Countertops:** Quartz countertops with a 4-inch backsplash and white porcelain undermount sinks.

## EXTERIOR AND COMMUNITY FEATURES

- ◆ **Expansive Courtyard:** Landscaped spaces with a double-sided fireplace, built-in seating, and deco accent wall tiles for a serene environment.
- ◆ **Recreation Room:** Features a pool table, TV, full kitchen, and tables—perfect for social gatherings.
- ◆ **Sun Deck:** Side deck with sunchairs for lounging and soaking up the California sun.
- ◆ **Back Patio Oasis:** BBQ area with counter and barstools, a cozy firepit with seating, and cloth sails for shade.
- ◆ **Walking Trail:** Scenic trail along the back of the property for peaceful strolls.
- ◆ **Fitness Center:** Fully equipped gym with modern machines and free weights.
- ◆ **Conference Room:** Meeting space for business needs.
- ◆ **Convenient Storage:** Separate storage room and bike racks for added convenience.
- ◆ **Secure Package Handling:** Dedicated parcel delivery room for Amazon, FedEx, and UPS.
- ◆ **Gated Parking:** 2nd level secured parking with automated gate access for peace of mind.
- ◆ **Quiet Spaces:** Benches thoughtfully placed throughout the courtyard for reading or relaxing.

